

**WD-40<sup>®</sup>**

**SPECIALIST<sup>®</sup>**

**THERE'S A  
SPECIALIST  
FOR EVERY JOB.**





**WD-40**

**SPECIALIST.**

**IT'S NOT FOR  
EVERYBODY.  
IT'S FOR YOU.**

WD-40<sup>®</sup> Specialist. A line of superior performing specialty products formulated for those who demand the best.



**CLEANERS & DEGREASERS**

**LUBRICANTS**

**PENETRANT**

**RUST MAINTENANCE**

**GREASES**



# WD-40

## SPECIALIST

# INDUSTRIAL-STRENGTH CLEANER & DEGREASER

WD-40 Specialist Industrial-Strength Cleaner & Degreaser is engineered and proven to be more powerful and safer than other degreasers on the market. Formulated with a unique bio-solvent which quickly breaks through tough grease and grime, yet unlike many harsh degreasers, it is safe for use on sensitive surfaces like aluminum, copper, carbon fiber and glass. Meets the EPA's Safer Choice Certification criteria for safety and efficacy. Added corrosion inhibitors prevent valuable tools and equipment from flash rust. NSF A1, A2, A4, A8, B1 (#153187).

Excellent for cleaning greasy automotive parts, tools, shop floors, industrial machinery, commercial appliances and equipment.

- Contains a powerful Bio-Solvent (Coconut/Palm Kernel Oil)
- Safe for use on multiple surfaces
- Safe to use in food processing facilities
- Non-flammable, non-corrosive, non-abrasive

Net Wt. 32oz.  
Item # 30035  
6 ct. Case  
# 300356



Net Wt. 24oz.  
Item # 30034  
6 ct. Case  
# 300349

Net Wt. 1 Gallon  
Item # 30036  
4 ct. Case  
# 300363



## CLEANERS & DEGREASERS

Net Wt. 55 Gallon  
Item # 30038  
1 ct. Case  
# 300387



# WD-40 COMPANY



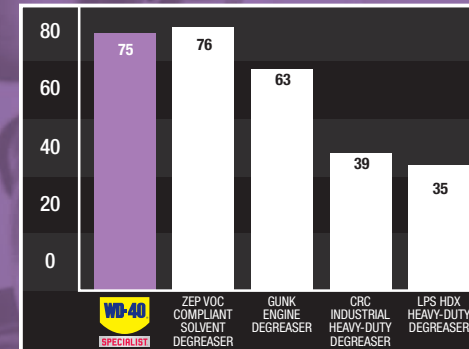
# WD-40

## SPECIALIST

# INDUSTRIAL-STRENGTH DEGREASER FAST-ACTING FORMULA

Powerful solvent-based degreaser that quickly cleans machinery, engines and equipment to look like new and run smoothly.

- Solvent-based formula quickly dissolves grease, oil, dirt, adhesives and more
- High flashpoint
- No residue
- Multi-surface
- Low fumes
- Contains PowerSolve Technology™
- 50-state VOC compliant
- Ideal for use on auto and truck engines, tire rims, tractors, forklifts, gears and chains, industrial machinery, power equipment and other metal tools
- NSF Category: K1
- NSF Number: 150956



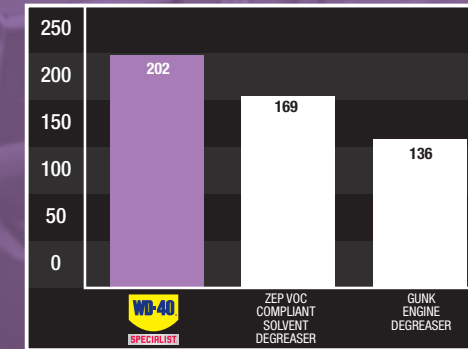
## EXTREME CLEANING SCORE

Test and what it means: This test evaluates the cleaning ability of a fluid by using a mechanical device, the Gardner Scrubability Apparatus, that pulls a sponge across a tile that has been soiled with a choice of substances. The three common soils that were tested are: A2 - Kitchen Grease; A3 - Industrial Soil; and A6 - Heavy Household Soil. WD-40 Specialist Machine & Engine Degreaser is able to remove more soil than leading competitors!

\*RESULTS SHOW PERCENTAGE OF SOIL REMOVAL. HIGHER IS BETTER.

Net Wt. 15oz.  
Item # 30028  
6 ct. Case  
# 300280

## CLEANERS & DEGREASERS



## FLASHPOINT

The temperature at which a particular organic compound gives off sufficient vapor to ignite in air.

\*CRC INDUSTRIAL HEAVY DUTY DEGREASER FLASHPOINT INFORMATION NOT AVAILABLE.

Test Lab: Sterling Laboratories (Sylvania, OH). ZEP is a registered trademark of Zep Inc. LPS is a registered trademark of LPS Laboratories. Gunk is a registered trademark of Radiator Specialty Company. CRC is a registered trademark of CRC Industries, Inc. Tested on 3/6/2015.



# WD-40

**SPECIALIST**

## MACHINE & ENGINE DEGREASER FOAMING SPRAY

Makes equipment run smoother, last longer and look like new.  
Powerful stream sprays up to five feet.

- Water-based formula produces deep penetrating foaming action
- Quickly removes grease, oil, dirt and grime
- Excellent soil removal score outperforms the competition
- 50-state VOC compliant
- Ideal for use on auto and truck engines, tractors, forklifts, gears and chains, industrial machinery, farm and power equipment and other metal tools
- NSF Category: C1
- NSF Number: 146737

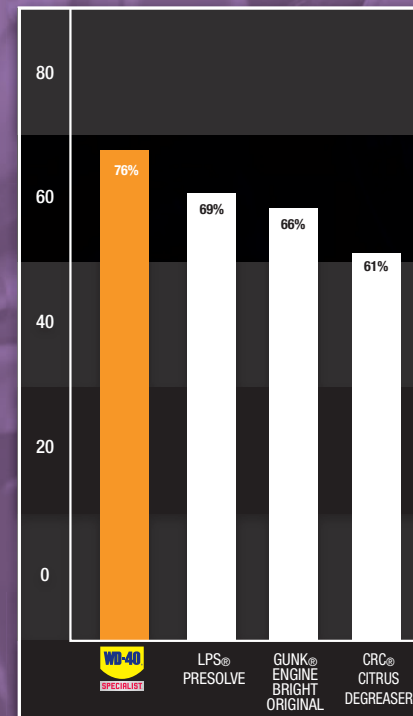


## CLEANERS & DEGREASERS

### EXTREME CLEANING SCORE

Test and what it means: This test evaluates the cleaning ability of a fluid by using a mechanical device, the Gardner Scrubability Apparatus, that pulls a sponge across a tile that has been soiled with a choice of substances. The three common soils that were tested are: A2 - Kitchen Grease; A3 - Industrial Soil; and A6 - Heavy Household Soil. WD-40 Specialist Machine & Engine Degreaser is able to remove more soil than leading competitors!

\*RESULTS SHOW PERCENTAGE OF SOIL REMOVAL. HIGHER IS BETTER.



Net Wt. 18oz.  
Item # 30007  
4 ct. Case  
# 300070

Test Lab: Sterling Laboratories (Sylvania, OH). LPS is a registered trademark of LPS Laboratories. Gunk is a registered trademark of Radiator Specialty Company. CRC is a registered trademark of CRC Industries, Inc.



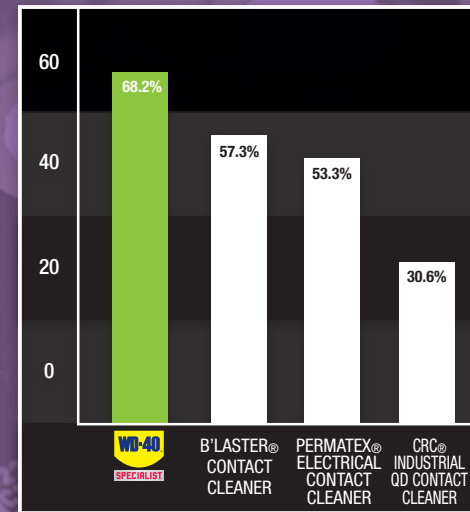
# WD-40

## SPECIALIST

# ELECTRICAL CONTACT CLEANER SPRAY

With patented Smart Straw® technology, dirt, dust and flux residue get blasted away with pin-point precision.

- Amazing Kb cleaning score of 205 vs. mineral spirits (Kb 25)
- Quick-drying with no residue
- Dielectric Strength > 25,000 volts
- Safe to use on all plastics, rubber & metal
- 50-state VOC compliant
- Ideal for cleaning oil, dirt, flux residue and condensation from printed circuit boards, controls, switches, precision instrument and electric panels
- NSF Category: K2
- NSF Number: 146857



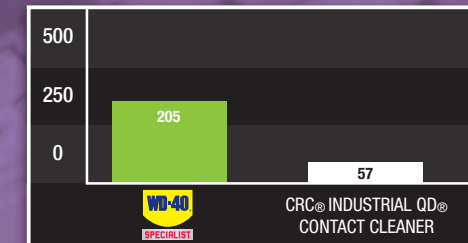
## EXTREME CLEANING SCORE

Test and what it means: This test evaluates the cleaning ability of a fluid by using a mechanical device, the Gardner Scrubability Apparatus, that pulls a sponge across a tile that has been soiled with a choice of substances. The soil tested is A3 - Industrial Soil (a vinyl composite). WD-40 Specialist Electrical Contact Cleaner removes over 10% more soil than leading competitors!

\*RESULTS SHOW PERCENTAGE OF SOIL REMOVAL. HIGHER IS BETTER.

Net Wt. 11oz.  
Item # 30055  
6 ct. Case  
# 300554

## CLEANERS & DEGREASERS



## Kb VALUE

Test and what it means: The Kauri-Butanol Value (Kb Value) is an international standard measure of solvent power for a hydrocarbon solvent. The Kb value of a chemical shows the maximum amount of hydrocarbon that can be added to a solution of kauri resin (a thick gum-like material) in butyl alcohol without causing cloudiness. The higher Kb value means that the solvent is more active in the ability to dissolve certain materials. WD-40 Specialist Electrical Contact Cleaner is rated far more aggressive in dissolving certain materials than the competition!

Test Lab: Sterling Laboratories (Sylvania, OH). B'Laster is a registered trademark of B'Laster Chemical Company Inc. Permatex is a registered trademark of ITW (Illinois Tool Works Inc.). CRC is a registered trademark of CRC Industries, Inc. Tested on 4/2/2012.

# WD-40 COMPANY



# WD-40

**SPECIALIST**

## FAST-ACTING CARB/THROTTLE BODY & PARTS CLEANER

The only all-in-one carburetor cleaner spray you will need to clean your carburetor, throttle body and unpainted metal parts. The dual action cleaning system breaks up tough, baked on carbon deposits then the powerful cleaning spray blasts away the deposits and waste, leaving behind no residue.

- Cleans carburetors, throttle body & metal parts
- Powerful formula blasts away tough deposits
- Reduced splash back & overspray
- Improves performance at high RPMs

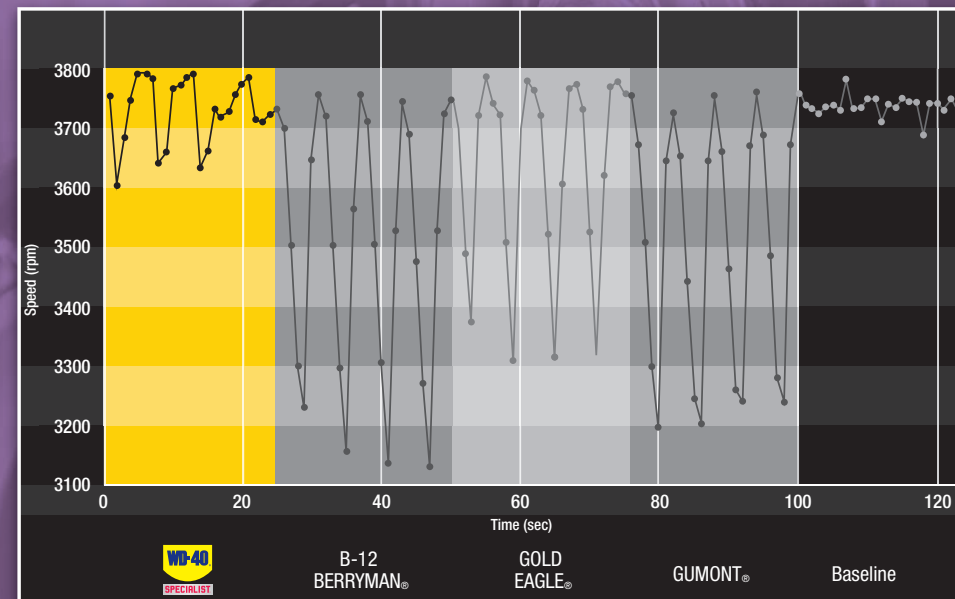


## CLEANERS & DEGREASERS

### MINIMAL STALLING EFFECTS AT HIGH ENGINE SPEED

Test and what it means: This chart determines the engine stability after using a carb cleaner at high RPMs. Each product is applied to the intake plenum and allowed to circulate. Data is collected after each product is applied and recorded for standard deviation from the average. A smaller standard deviation implies that the product minimalizes stalling effects. WD-40 Specialist Carb/Throttle Body & Parts Cleaner minimalizes stalling effects at both low and high RPMs.

\*RESULTS SHOW AVERAGE RPM. CLOSER TO BASELINE IS BETTER.



Net Wt. 13.5oz.  
Item # 30013  
6 ct. Case  
# 300134

Test Lab: Intertek Carnot Emission Services (San Antonio, TX). Gold Eagle is a registered trademark of Gold Eagle Company. Berryman is a registered trademark of Berryman Products Inc. Gumont is a registered trademark of ITW Global Brands.



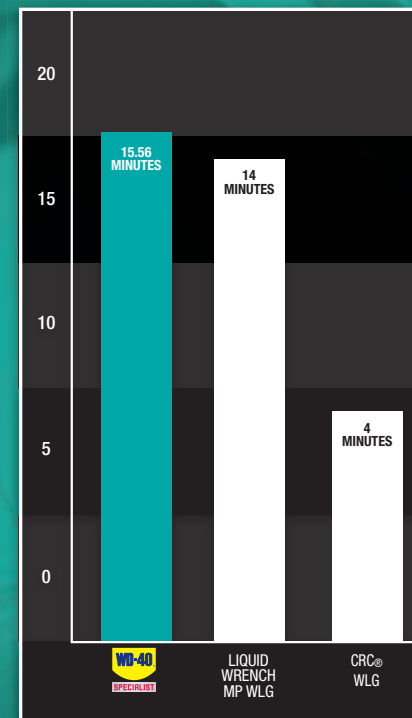
# WD-40

**SPECIALIST.**

## PROTECTIVE WHITE LITHIUM GREASE

Ideal for metal-to-metal applications, preventing rust and corrosion. Sprays on evenly as a liquid and sets dry for a thick, protective coating that won't wash off. Temperature range 0° F to 300° F.

- Long-lasting lubrication
- Won't run off
- Rust inhibiting barrier
- 50-state VOC compliant
- Ideal for use on auto hinges, gears, sprockets, outdoor hinges, latches, overhead door tracks, pulleys, cables and guide rails
- NSF Category: H2
- NSF Number: 146864



## LONG LASTING

WD-40  
Specialist  
WLK

**15.56 min.**

Liquid  
Wrench  
MP WLK

**14 min.**

CRC  
WLK

**4 min.**

The test and what it means: This test measures the endurance or wear life of a lubricant. The test represents the length of time a lubricant can withstand pressure. WD-40 Specialist Protective White Lithium Grease provides long lasting lubrication.

\*RESULTS SHOWN IN MINUTES. LONG-LASTING CLAIM BASED ON RESULTS FROM 4 TEST RUNS. LONGER IS BETTER.

Net Wt. 10oz.  
Item # 30061  
6 ct. Case  
# 300615

Test Lab: Falex Corporation (Sugar Grove, IL). CRC is a registered trademark of CRC Industries, Inc. Liquid Wrench is a registered trademark of Radiator Specialty Company. Tested on 2/21/2012.

**WD-40**  
COMPANY



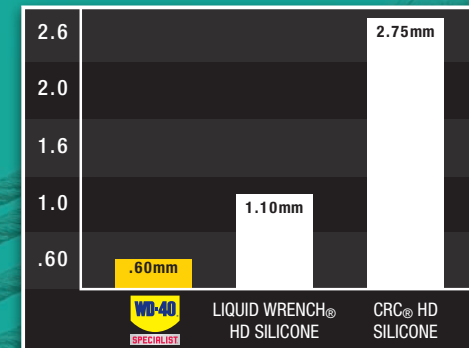
# WD-40

**SPECIALIST.**

## WATER RESISTANT SILICONE LUBRICANT

Safe to use on all metal and non-metal surfaces including rubber, plastic and vinyl. Dries fast and leaves a clear, non-staining film without stickiness or messy residue. Safe for temperature ranges between -100° F to 500° F.

- Multi-surface
- Quick-drying
- Protects against rust
- 50-state VOC compliant
- Ideal for use on cables, pulleys, guide rails, valves, linkages, hinges, locks and more
- NSF Category: H2
- NSF Number: 146863



### 4 BALL WEAR

**Test and what it means:** This test measures the wear protection of a fluid on a metal surface. A steel ball is pressed with force against three stationary steel balls and is rotated at 1200 rpm for 60 minutes. WD-40 Specialist Water Resistant Silicone is far superior to the competition leaving the smallest scar, representing its ability to protect your machinery and other moving parts better than the rest.

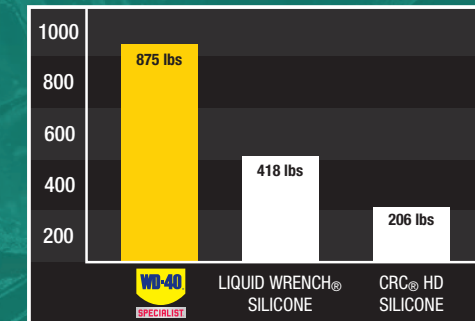
\*RESULTS SHOW DEPTH OF SCAR IN MILLIMETERS. LOWER IS BETTER.

Net Wt. 11oz.  
Item # 30001

6 ct. Case  
# 300012

Test Lab: Falex Corporation (Sugar Grove, IL). CRC is a registered trademark of CRC Industries, Inc. Liquid Wrench is a registered trademark of Radiator Specialty Company. Tested on 2/21/2012.

## LUBRICANTS



### EXTREME PRESSURE

**Test and what it means:** This test measures the load carrying properties of a lubricant. WD-40 Specialist Water Resistant Silicone demonstrates that it is able to withstand higher pressure than the leading competitors!

\*RESULTS SHOWN IN POUNDS. HIGHER IS BETTER.

WD-40  
Specialist  
**875 lbs**

Liquid Wrench  
Silicone  
**418 lbs**

CRC HD  
Silicone  
**206 lbs**

**WD-40**  
COMPANY



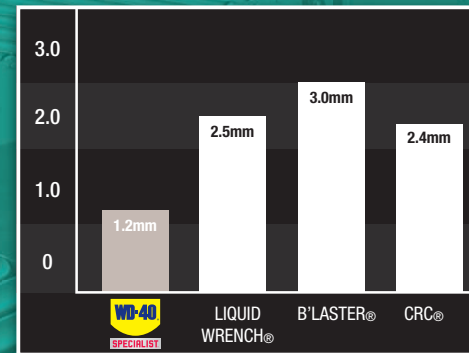
# WD-40

## SPECIALIST

### DIRT & DUST RESISTANT DRY LUBE PTFE SPRAY

Quick-drying PTFE formula provides superior lubrication and long-lasting corrosion protection with no oily residue. Temperature range -50° F to 500° F.

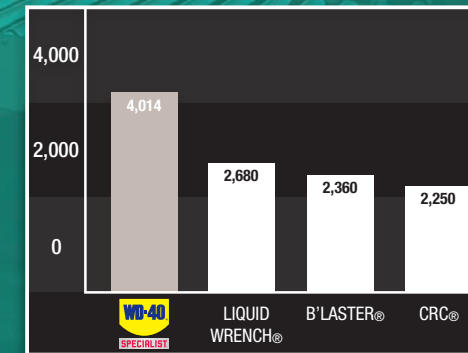
- PTFE formula is ideal for reducing friction and wear
- Won't attract dust
- Ideal for releasing molded parts
- 50-state VOC compliant
- Ideal for use on blades and bits, door and window tracks, slides, conveyor belts, rollers, hinges, power tools and equipment
- NSF Category: H2
- NSF Number: 146856



### 4 BALL WEAR

Test and what it means: This test measures the wear protection of a fluid on a metal surface. A steel ball is pressed with force against three stationary steel balls and is rotated at 1200 rpm for 60 minutes. WD-40 Specialist Dirt & Dust Resistant Dry Lube outperforms the competition, leaving a scar that is only half as deep as leading competitors.

\*RESULTS SHOW DEPTH OF SCAR IN MILLIMETERS. LOWER IS BETTER.



### EXTREME PRESSURE

Test and what it means: This test measures the load carrying properties of a lubricant. WD-40 Specialist Dirt & Dust Resistant Dry Lube is far superior to the competition, demonstrating that it is able to withstand over 4000 lbs of pressure!

\*RESULTS SHOWN IN POUNDS. HIGHER IS BETTER.

Net Wt. 10oz.  
Item # 30005

6 ct. Case  
# 300059

Test Labs: Falex Corporation (Sugar Grove, IL), Matco Services Inc. (Division of Valmont Industries, Pittsburgh, PA) CRC is a registered trademark of CRC Industries, Inc. Liquid Wrench is a registered trademark of Radiator Specialty Company. B'Laster is a registered trademark of B'Laster Chemical Company Inc. Tested on 10/25/2012.

# WD-40 COMPANY



# WD-40

## SPECIALIST

# SPRAY & STAY GEL LUBRICANT NO-D RIP FORMULA

Introducing WD-40 Specialist Spray & Stay Gel Lubricant – No-Drip Formula. A unique gel lubricant that sprays on thick and won't run, drip or make a mess. Provides 12x longer-lasting lubrication and prevents rust and corrosion for up to 1 year. No-fling makes it excellent for moving parts that need lubrication including chains, cables, gears, rollers and bearings. Safe on multiple surfaces including metal, plastic and rubber. Withstands temperature ranges from -100F to 500F. VOC compliant in all 50 states. Smart Straw applicator sprays two ways.

- Thick gel lubricant
- No-drip/No-mess
- 12x longer-lasting lubrication\*
- Prevents rust for up to 1 year\*\*
- Perfect for vertical surfaces

\* Compared to WD-40® Multi-Use Product using Independent Lab test ASTM D562DA

\*\* Independent testing conducted in salt spray chamber. Results may vary depending on extreme conditions.

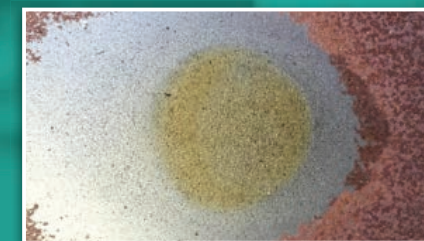


# LUBRICANTS

## PREVENTS RUST AND CORROSION FOR UP TO 1 YEAR



Day 1 - June 18, 2015



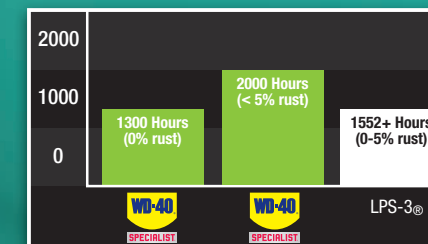
Day 60 - August 17, 2015



Day 117 - October 13, 2015

## SALT SPRAY TEST

Test and what it means: This test is used to measure the level of corrosion protection provided by a test fluid.



Net Wt. 10oz.  
Item # 30010  
6 ct. Case  
# 300103

Test Labs: Tested independently at Lubrizol Corporation testing labs (Ohio) and Petro-Lubricant Testing Laboratory (Lafayette, NJ) utilizing ASTM B-117 : Salt Spray (Fog) Apparatus.

# WD-40 COMPANY



# WD-40

**SPECIALIST.**

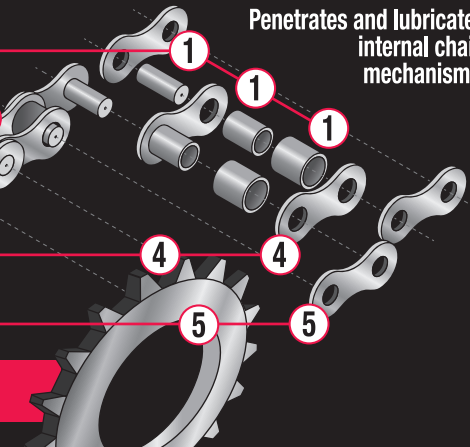
## NON-FLING ROLLER CHAIN LUBRICANT

- Protects chain from breaking prematurely
- Non-fling at high RPM
- Penetrates into inner chain links, pins, bushings and rollers to protect chain against rust and breakage
- Lubricates deep into the chain and thickens to repel dirt and stay in place even at high rpms. That's because it comes out thin enough to penetrate chain pin and bushings and then thickens to provide long-lasting lubrication.
- The advanced ceramic reinforced formula repels dirt and helps keep the lubricant from flinging off the chain during use.



# LUBRICANTS

1. Penetrates into chain inner links, pins, bushings and rollers
2. Displaces contaminants and trapped moisture
3. Dries quickly inside links (non-fling)
4. Provides long-lasting lubrication on chain and sprockets
5. Protects chains and sprockets against rust and premature breakage



Penetrates and lubricates internal chain mechanisms.

**Safe on O-Ring chains**

Net Wt. 10oz.  
Item # 30049

6 ct. Case  
# 300493

**WD-40**  
COMPANY



# WD-40

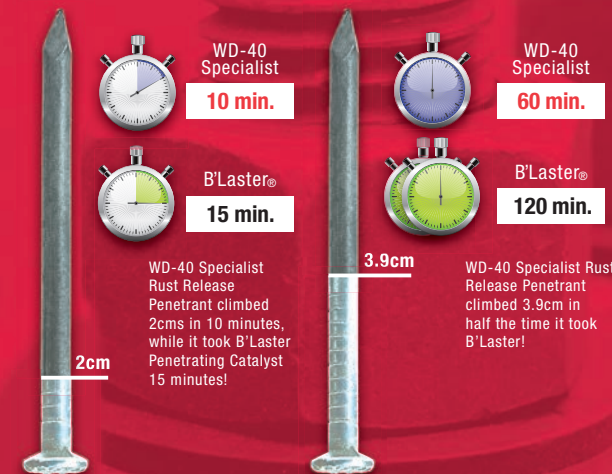
## SPECIALIST

# RUST RELEASE PENETRANT SPRAY

The capillary action penetrates into tight crevices, threads and seams to break the bonds that hold stuck parts together. Helps prevent rust and corrosion from re-forming and leaves behind a lubricating layer.

- Frees corroded nuts and bolts
- Penetrates rust
- Fast-acting
- 50-state VOC compliant
- Safe to use on plastics, rubber and metal

Blu Torch™ Technology is a unique blend of solvents, metal working fluids, and surfactants that provide fast-acting penetration. No other penetrant has our combination.



## NAIL CLIMB TEST

The test and what it means: To determine the penetrating ability of a fluid, a large nail is used to evaluate how quickly and completely the fluid will move up a vertical surface. WD-40 Specialist Rust Release Penetrant works fast to free rusted bolts and other stuck parts.

Net Wt. 11oz.  
Item # 30000

6 ct. Case  
# 300004

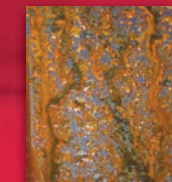
Test Labs: Matco Services Inc. (Division of Valmont Industries, Pittsburgh, PA). The Lubrizol Corporation (Wickliffe, Ohio). B'Laster is a registered trademark of B'Laster Chemical Company Inc. Tested on 2/21/2012.

Source: Independent laboratory nail climb test against 2014 low VOC PB Blaster Penetrating Catalyst Product. August 2014.

# PENETRANT



WD-40  
SPECIALIST



B'Laster®

## CORROSION PROTECTION

WD-40 Specialist Rust Release Penetrant

B'Laster Penetrating Catalyst

Less than 5% corrosion after 5 hours

90% corrosion after 5 hours

The test and what it means: This test is used to measure the level of corrosion protection provided by a test fluid under extreme conditions. While B'Laster treated metal experiences 90% corrosion after 5hrs, WD-40 Specialist Rust Release Penetrant helps prevent rust and corrosion from re-forming even in rust susceptible environments.

WD-40  
COMPANY



# WD-40

**SPECIALIST**

## LONG-TERM CORROSION INHIBITOR

Metal-seeking Vapor Corrosion Inhibitors (VCIs) seal & protect metals from the air and moisture that can cause rust. VCIs continue to work, even if some of the sprayed surface gets rubbed off, re-sealing the vulnerable surface.

- Long-lasting protection
- Blocks rust and corrosion
- Protective coating for metals
- Ideal to use on equipment before storing
- NSF Category: A7
- NSF Number: 146726

Perfect for protecting equipment like snow blowers, mowers, boats and trailers before placing in seasonal storage.

*\*Protects against corrosion for one year outdoors and two years indoors*

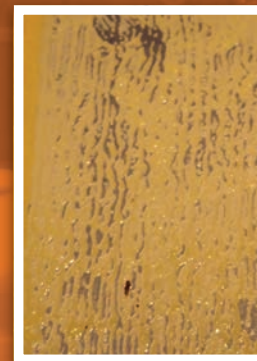
**PROTECTS METAL  
FOR UP TO  
ONE YEAR**



## RUST MAINTENANCE

WD-40

SPECIALIST



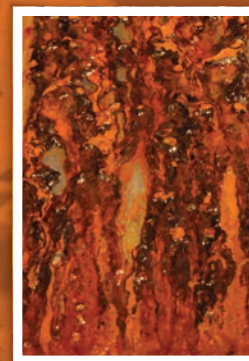
5% RUST 1200 HRS.

B'Laster<sup>®</sup>  
CSP CORROSION STOP



90% RUST 48 HRS.

CRC<sup>®</sup>  
SP-350 CORROSION INHIBITOR



90% RUST 552 HRS.

CRC<sup>®</sup>  
SP-400 CORROSION INHIBITOR



90% RUST 888 HRS.

## CORROSION PROTECTION

The test and what it means: ASTM B-117 is used to measure the level of corrosion protection provided by a test fluid under extreme conditions. Steel panels are treated with the test fluid and are allowed to drain for 2 hours, then placed in the salt spray cabinet that contains a fog of 5% salt (NaCl) solution. Even after 1200 hours of exposure to the harsh environments, WD-40 Specialist Long-Term Corrosion Inhibitor helps prevent corrosion when compared to untreated metal.

Net Wt. 6.5oz.  
Item # 30003

6 ct. Case  
# 300035

Test Lab: Matco Services Inc. (Pittsburgh, PA). B'Laster is a registered trademark of B'Laster Chemical Company Inc. CRC is a registered trademark of CRC Industries, Inc. Tested on 2/18/2011.

WD-40  
COMPANY



# WD-40

**SPECIALIST.**

## RUST REMOVER SOAK

Safely and effectively removes rust without acids or caustic chemicals. This formula is non-toxic, contains no VOCs, and works without harming surrounding surfaces like rubber, plastic and paint. 100% of the ingredients are biodegradable. Restores even intricate, hard to reach surfaces to clean bare metal that is ready to paint. Brightens copper, brass and similar alloys.

- Safely removes tough rust from metal parts and tools
- All ingredients are biodegradable
- Targets the rust, safe for surrounding areas
- Non-toxic and acid-free
- NSF Category: P1
- NSF Number: 146753

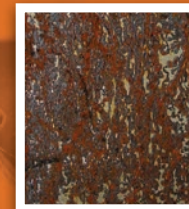


## RUST MAINTENANCE

**WD-40**

**SPECIALIST**

**SALT PANEL**



6 hours of salt exposure.



Results shown after a 2 hour treatment.

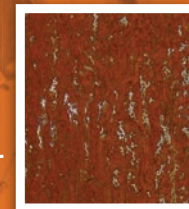


Results shown after a 4 hour treatment.

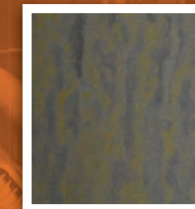
**WD-40**

**SPECIALIST**

**HUMIDITY PANEL**



6 hours of humidity exposure.



Results shown after a 2 hour treatment.



Results shown after a 4 hour treatment.

## SOAK TEST

The test and what it means: Used to evaluate the rust removing capabilities of a test fluid. Rusty steel panels (panels that have been rusted by being exposed to humidity and the salt spray chamber) are partially dipped in rust removing fluid. As shown in the images above, WD-40 Specialist Rust Remover Soak removes tough rust and restores the soaked section of the steel panel back to bare metal.

Net Wt. 128oz.  
Item # 30004

4 ct. Case  
# 300042

Test Labs: Matco Services Inc. (Division of Valmont Industries, Pittsburgh, PA)  
The Lubrizol Corporation (Wickliffe, Ohio). Tested on 9/6/2011.

**WD-40**  
COMPANY



# WD-40

**SPECIALIST.**

## SUPERIOR PERFORMANCE TRUE MULTI-PURPOSE GREASE



WD-40<sup>®</sup> Specialist<sup>®</sup> Superior Performance True Multi-Purpose Grease is the only grease you'll ever need – a versatile solution with properties even lithium greases don't offer. With a dropping point above 650° F, it also provides marine-grade water resistance and protection against rust and corrosion. Engineered for high-speed and heavy-duty applications, True Multi-Purpose Grease is an excellent choice for maintenance of farm and construction equipment, as well as lubricating machinery in damp conditions. Formulated with calcium sulfonate (OBSC) technology, it is interchangeable with other WD-40<sup>®</sup> Specialist<sup>®</sup> greases.

- Long-lasting\* corrosion protection extends the life of your equipment
- Outperforms in all 3 features: temperature, pressure & water wash-out\*\*
- Compatible with WD-40 Specialist Lithium Complex greases. Always refer to OEM when switching grease types

\* Long-lasting claim relates to corrosion resistance using independent lab test ASTM D5969, bearing corrosion in 5% synthetic sea water.

\*\* Performance based on independent lab test ASTM D2266, ASTM D2596, ASTM 2265, and ASTM D5969, bearing corrosion in 5% synthetic sea water.



# GREASES



**WITHSTANDS  
EXTREME  
TEMPERATURES**



**PERFORMS  
UNDER EXTREME  
PRESSURE**



**EXTREME  
WATER  
RESISTANCE**

Net Wt. 14oz.  
Item # 30042  
10 ct. Case  
# 300424





# WD-40

## SPECIALIST

### HEAVY-DUTY HIGH TEMPERATURE GREASE

- High temperature lubrication (drop point 625° F)
- Outstanding performance under heavy mechanical loads
- Excellent corrosion protection

### HEAVY-DUTY EXTREME PRESSURE GREASE

- Extreme pressure lubrication
- Outstanding surface protection against heavy load and wear
- Excellent corrosion protection

### MARINE-GRADE WATER RESISTANT GREASE

- Excellent water wash-out performance
- Outstanding rust and corrosion protection
- Maximum lubrication for extreme marine applications

Net Wt. 14oz.  
Item # 30039  
10 ct. Case  
# 300394



Net Wt. 14oz.  
Item # 30040  
10 ct. Case  
# 300400

Net Wt. 14oz.  
Item # 30041  
10 ct. Case  
# 300417

# GREASES



**WD-40**

MULTI-USE PRODUCT

## WD-40 EZ-REACH™

Reach the unreachable with WD-40's newest product. It goes to places you couldn't get to before and with the same powerful formula you have come to know and love.

- 8" Flexible straw
- Straw bends and keeps its shape
- Sprays 2 ways
- 50-state VOC compliant
- Use to get behind engine blocks, tight plumbing jobs, hard-to-reach hinges, rollers and more

**WD-40**

MULTI-USE PRODUCT

**EZ-REACH™**

FLEXIBLE STRAW

KEEPS ITS SHAPE

GETS INTO  
HARD-TO-REACH  
SPACES

⚠ DANGER: FLAMMABLE. CONTENTS UNDER PRESSURE.  
IRRITANT OR FATAL IF SWALLOWED.  
SEE BOTTOM FOR FIRST AID.

NET WEIGHT

**WD-40 MULTI-USE PRODUCT**



Net Wt. 14.4oz.  
Item # 49019

6 ct. Case  
# 490194

**WD-40**  
COMPANY





# MORE GREAT PRODUCTS FROM THE WD-40 COMPANY

- **WD-40® Multi-Use Product 55 Gallon**  
Item # 49013
- **WD-40® Multi-Use Product 5 Gallon**  
Item # 49012
- **WD-40® Multi-Use Product 1 Gallon**  
Item # 49011  
4ct. Case # 490118
- **Spray Applicator**  
Item # 10000  
4ct. Case # 10100
- **20oz. Non-Aerosol WD-40® Trigger Pro.**  
Item # 49010  
6ct. Case # 490108  
12ct. Case # 490101
- **3oz. WD-40® Multi-Use Product**  
Item # 49000  
12ct. Case # 490002  
24ct. Case # 490009
- **11oz. WD-40® Smart Straw.**  
Item # 49004  
12ct. Case # 490040
- **12oz. WD-40® Smart Straw.**  
Item # 49005  
12ct. Case # 490057
- **14.4oz. WD-40 EZ-REACH™.**  
Item # 49019  
6ct. Case # 490194
- **18oz. WD-40® Big Blast.**  
Item # 49009  
12ct. Case # 490095
- **16oz. WD-40® Multi-Use Product Industrial Size (Industrial Channel Only)**  
Item # 49008  
12ct. Case # 490088



## WD-40® MULTI-USE PRODUCT







## MORE GREAT PRODUCTS FROM THE WD-40 COMPANY

- **4oz. Lava® Heavy-Duty Hand Cleaner Professional Line Bar**  
Item # 10083  
48ct. Case # 10383
- **5.75oz. Lava® Heavy-Duty Hand Cleaner**  
Item # 10085  
24ct. Case # 10185
- **5.75oz. Lava® Heavy-Duty Hand Cleaner Twin Pack**  
Item # 10086  
12ct. Case # 10186
- **3oz. 3-IN-ONE® Multi-Purpose Oil**  
Item # 10035  
24ct. Case # 10135
- **4oz. 3-IN-ONE® Multi-Purpose Oil with Marksman Telescoping Spout**  
Item # 10070  
12ct. Case # 10070
- **8oz. 3-IN-ONE® Multi-Purpose Oil**  
Item # 10038  
12ct. Case # 10138
- **4oz. 3-IN-ONE® Penetrant Drip Oil**  
Item # 12001  
12ct. Case # 120015
- **4oz. 3-IN-ONE® Silicone Drip Oil**  
Item # 12000  
12ct. Case # 120008
- **4oz. 3-IN-ONE® Dry Lube Drip Oil**  
Item # 12002  
12ct. Case # 120022
- **4oz. 3-IN-ONE® PTFE Lube Drip Oil**  
Item # 12003  
12ct. Case # 120039
- **4oz. 3-IN-ONE® Pneumatic Tool Drip Oil**  
Item # 12004  
12ct. Case # 120046
- **11oz. 3-IN-ONE® Garage Door Lube**  
Item # 10058  
6ct. Case # 100581
- **2.5oz. 3-IN-ONE® Lock Dry Lube**  
Item # 12007  
12ct. Case # 120077
- **3oz. 3-IN-ONE® Motor Oil**  
Item # 10045  
24ct. Case # 101456



LAVA® AND 3-IN-ONE®





**WD-40**®

**SPECIALIST**®

[WWW.WD40SPECIALIST.COM](http://WWW.WD40SPECIALIST.COM)

©2018 WD-40 COMPANY  
WDSPMINI18 V1

